

**APR. 13<sup>TH</sup>, 2022**



# **DEVELOP GUIDANCE FOR STRUCTURAL BEHAVIOR OF TALL HAUNCHES IN TXDOT BEAM AND GIRDER**

---

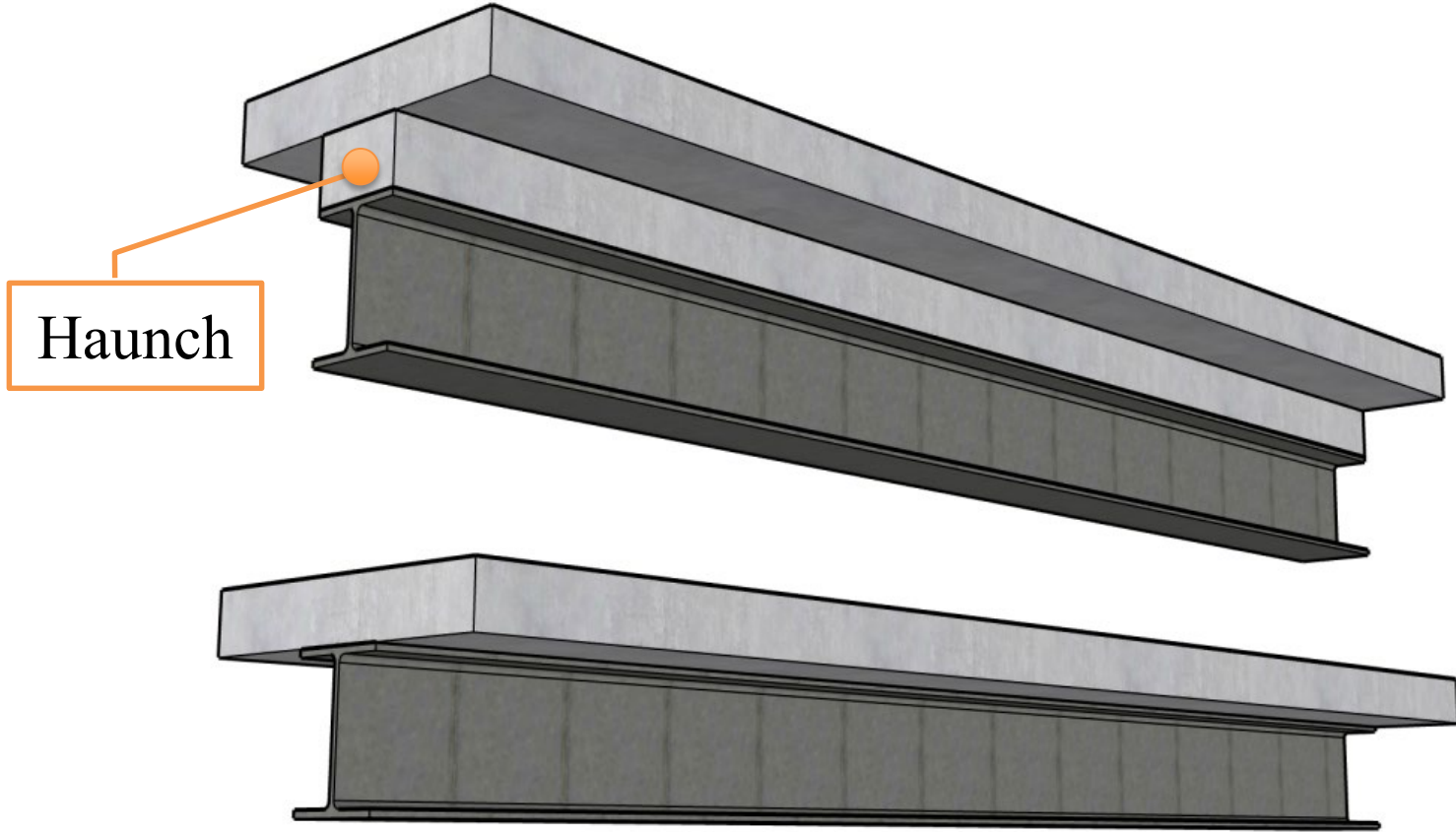
CTR Symposium

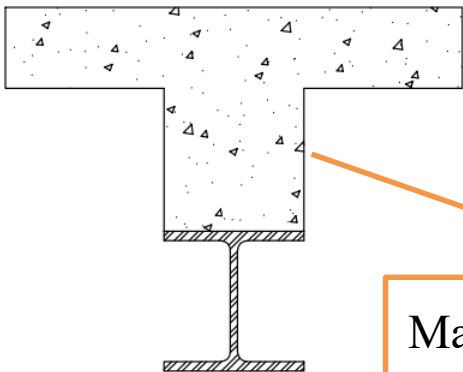
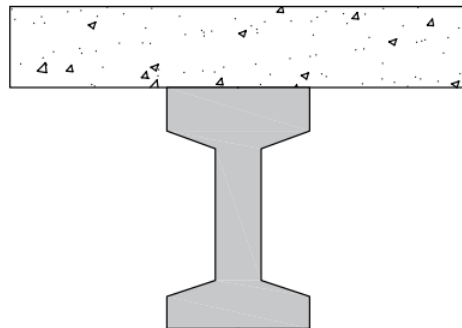
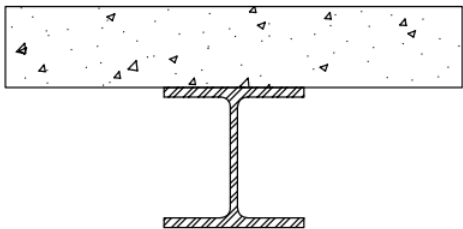
Presented by Zhenghao Zhang

Supervisor: Prof. Eric Williamson

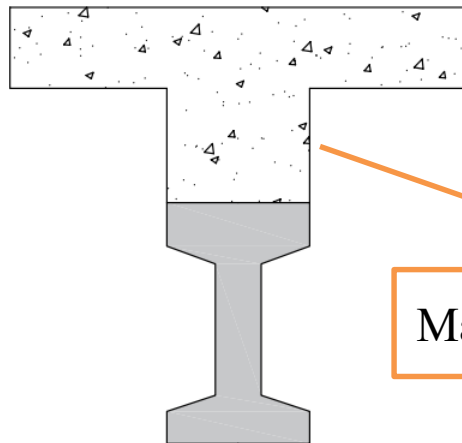
Researcher: Prof. Todd Helwig, Prof. Michael Engelhardt, Prof. Oguzhan Bayrak

Graduate Research Assistant: Nidhi Khare, Zhenghao Zhang

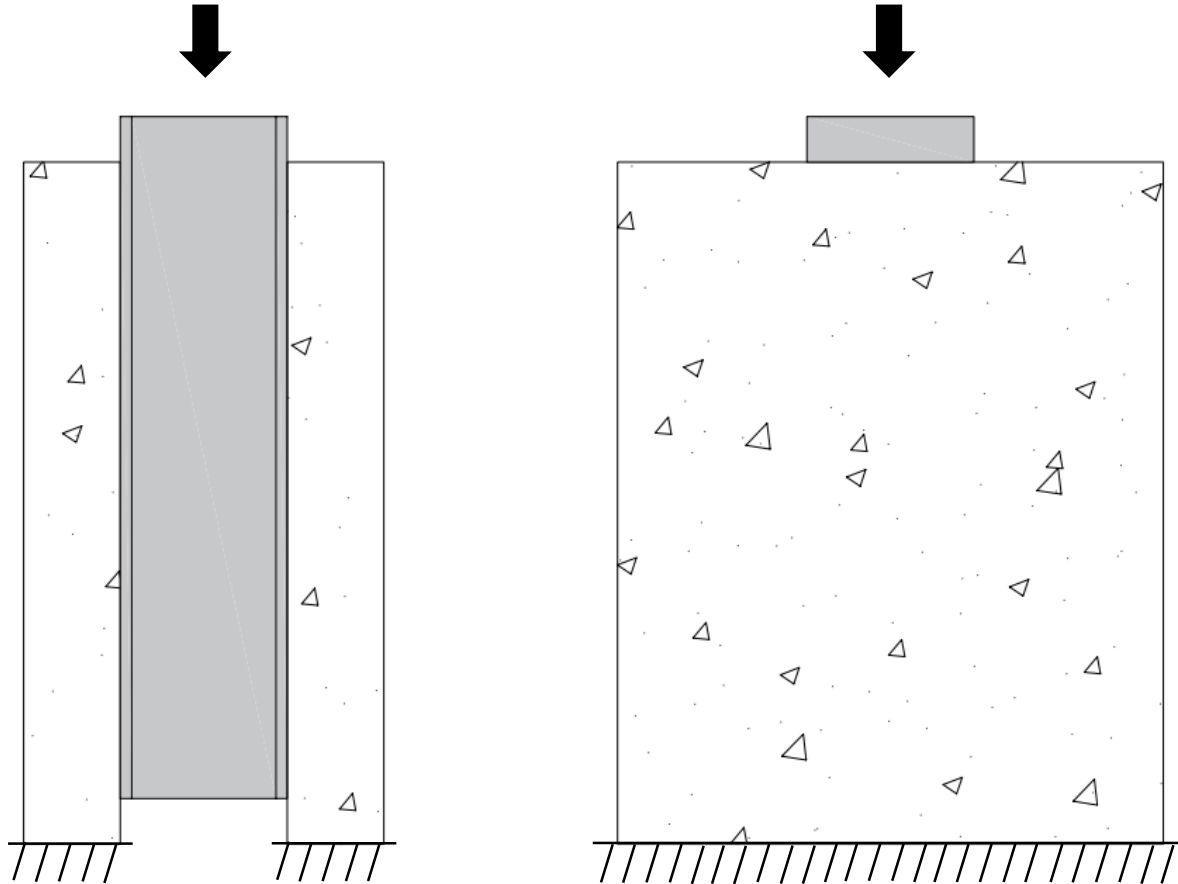




Max. Height: 15-inch



Max. Height: 12-inch

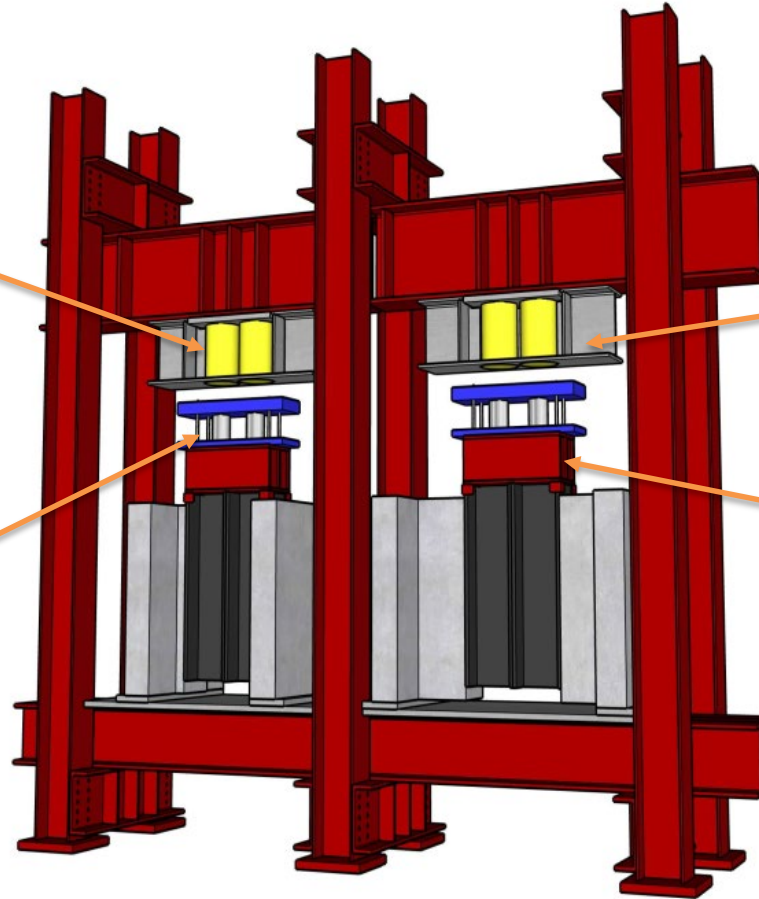


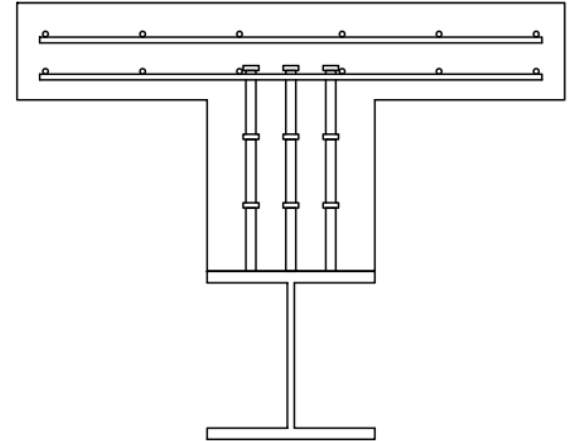
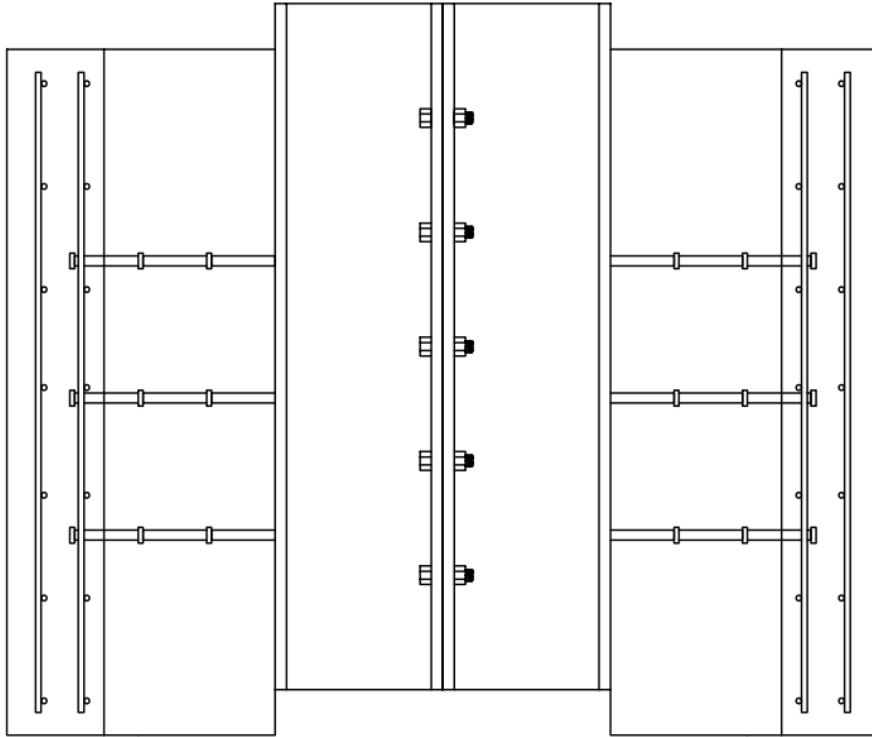
1100kip Capacity

Actuator Lateral Support

Load Cells

Spreader Beam





Thank you for listening!  
Questions and Comments?